



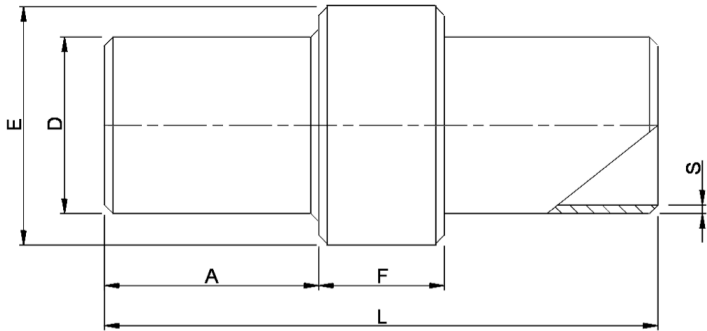
### For main pipelines

Usually **ready in stock** from DN **3/4"** to DN **16"**, the PROCHIND® insulating joints for mainline Pn 16-25 are normally produced in diameters from **3/4"** to **56"** with bevelled ends and/or flanged.

**Su richiesta** FAP è in grado di produrre giunti PROCHIND® fino a **82"**, per pressioni fino a **250 bar** e temperature fino a **200°C**.

On request FAP is able to produce PROCHIND® insulating joints up to **82"** diameter, operating pressure up to **250 bar / 25 Mpa**, operating temperature up to **200°C / 392°F**. The particular project design with the special **NBR** gasket with **rectangular** shape (**PROCHIND® Patent**), has allowed the realization of a monolithic element with high mechanical and structural characteristics.

Suitable for: **WATER, GAS, HYDROCARBONS**



### TECHNICAL SPECIFICATIONS

Manufactured and tested	<b>UNI-CIG 10285</b>
Max operating pressure	<b>25 bar / 2,5 MPA</b>
Test pressure	<b>38 bar / 3,8 Mpa</b>
Max operating temperature	<b>70°C / 158°F</b>
El. Resistance in air at 1000V d.c.	<b>5 Mohm</b>
Dielectric test	<b>3000 V</b>

### MATERIALS

Pipe pups	<b>Steel UNI 7088/API 5L/ASTM</b>
Main Body	<b>Forged A105/ASTM/UNI</b>
Insulating rings	<b>Polycarbonate/G10/G11</b>
Gaskets	<b>NBR/VITON</b>
Ends	<b>bevelled API 5L / flanged</b>
Coatings	<b>Epoxy resins</b>

DN	D	S	A	F	E	L	Kg
3/4"	26,7	3,9	102	46	67	250	1,2
1"	33,4	3,4	105	46	67	250	1,4
1"1/4	42,2	3,7	123	50	76	300	1,7
1"1/2	48,3	3,7	120	55	83	300	2,0
2"	60,3	3,9	144	56	95	350	3,0
2"1/2	76,1	4,5	142	62	114	350	4,5
3"	88,9	3,6	168	65	127	400	6
4"	114,3	4	172	65	155	400	9,0
5"	141,3	4,8	216	75	193	500	14,7
6"	168,3	5,6	214	83	229	500	20,0
8"	219,1	6,4	205	100	273	500	31,0
10"	273	6,4	299	115	340	700	57,0
12"	323,8	7,1	310	130	398	700	75,0
14"	355,6	7,9	420	180	459	1000	149,0
16"	406,4	7,9	420	190	510	1000	166,0
18"	457,2	7,9	345	210	552	900	191,0
20"	508	7,9	500	212	602	1200	224,0
22"	558,8	7,9	386	228	660	1200	247,0
24"	609,6	7,9	485	225	734	1200	310,0
26"	660,4	7,9	376	248	762	1000	340,0
28"	711,2	7,9	416	268	822	1100	410,0
30"	762	8	416	268	872	1100	435
32"	812,8	10	400	300	932	1100	575
34"	863,6	10	400	300	984	1100	635
36"	914,4	10	440	320	1032	1200	690
38"	965,2	12	440	320	1082	1200	790
40"	1016	12	425	350	1154	1200	985
42"	1066,8	12	425	350	1206	1200	1040
48"	1219,2	12	510	380	1375	1200	1340
56"	1422,4	12	747	405	1576	1900	1870

dimensions in mm are for information only and may change